



HighlandGriffith
CHAMBER OF COMMERCE

Promoting Good Business

Member Happenings

HIGHLANDGRIFFITHCHAMBER.COM

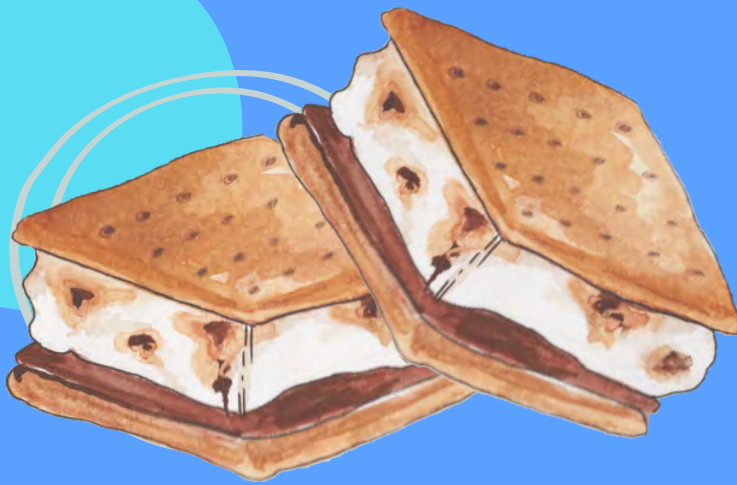
THE LARRY NEFF CENTER FOR CAREER CONNECTIONS



WORD SWAG AND S'MORES

TUESDAY, AUGUST 10TH

11:00AM-12:00PM



In honor of National S'mores Day we will be giving out prepackaged s'mores while you learn about Word Swag. Word Swag is a great way to make word art to promote your business, post to your social media, or anything else you can think of.

Contact:
Yiakeshia Herma
1601 West 45th Avenue
Griffith, IN. 46319
(219)513-9307
yherma@goodwill-ni.org





Marketing and Corporate Communications
901 MacArthur Blvd.
Munster, Indiana 46321
P: 219-703-1947
F: 219-703-6641
COMHS.org

News Release

Community Hospital • Munster | St. Catherine Hospital • East Chicago | St. Mary Medical Center • Hobart
Community Stroke and Rehabilitation Center • Crown Point

July 2, 2021

FOR IMMEDIATE RELEASE

Community Healthcare System hosting Open Interviews

Community Healthcare System is offering open interviews to fill full- and part-time positions at multiple locations across Northwest Indiana.

Job seekers are encouraged to drop in during open interviews, which will take place from **8 to 10 a.m. and 1 to 3 p.m. every Thursday through August 19** at the following locations:

- **Community Hospital/CHS Conference Center**, 9201 Calumet Ave., Munster
- **St. Catherine Hospital**, 4321 Fir St., East Chicago
- **St. Mary Medical Center**, 1500 S. Lake Park Ave., Hobart
- **Community Stroke & Rehabilitation Center**, 10215 Broadway, Crown Point

“We are always looking for caring, compassionate people to join our team,” said Tony Ferracane, vice president of Human Resources for Community Healthcare System. “These interviews provide an easy opportunity for job candidates to meet directly with our recruiters at multiple locations throughout our system.”

Job opportunities are available throughout the healthcare system, including the hospitals, clinics and physician offices. Benefit-eligible positions include health insurance, paid time off, retirement contribution and more.

Available positions include:

- Case managers
- Cooks
- Dietary stewards
- Environmental service assistants
- Food service workers
- Pharmacy techs
- Medical assistants
- Medical technologists
- Nursing assistants
- Phlebotomists
- Registered nurses
- Registration representatives
- Respiratory therapists
- Social workers
- Surgery techs

Visit **COMHS.org/careers** to view available jobs and apply online.

###

WICKER MEMORIAL PARK
ADRIAN A. SANTOS

NORTH TOWNSHIP TRUSTEE PRESENTS

TICKETS
\$7

Summer
CONCERT SERIES 2021

21 AND OVER
RAIN OR SHINE

Thursdays 7:30pm - 10:30pm | Doors open at 6:00pm

Tickets Available At **Eventbrite**

SEASON PASSES AVAILABLE FOR \$50

6-24



Trippin Billies
DAVE MATTHEWS TRIBUTE
TRIPPINBILLIES.COM



One of These Nights
A TRIBUTE TO THE EAGLES
ONEOFTHESENIGHTSBAND.COM



Small Town
A JOHN MELLENCAMP
EXPERIENCE
FACEBOOK.COM/SMALL.TOWN.BAND.INDIANA

7-15



Double Vision
THE ULTIMATE FOREIGNER
EXPERIENCE
DOUBLEVISIONBAND.COM



Kashmir
CHICAGO'S LED ZEPPELIN SHOW
KASHMIRCHICAGO.COM



MegaBeatles
A TRIBUTE TO THE MUSIC OF
THE BEATLES
FACEBOOK.COM/MEGABEATLES



Southern Accents
A TRIBUTE TO TOM PETTY
SOUTHERNACCENTS.COM



Queen Flash
A TRIBUTE TO THE
MUSIC QUEEN
QUEENFLASH.CA



Echoes of Pompeii
PINK FLOYD TRIBUTE
ECHOESOF POMPEII.COM



Heavy
SPECIALIZING MOTOWN, R&B,
LATIN, & SOFT ROCK
THEBANDHEAVY.ORG

SAVE THE DATE
PINTS
IN THE 8/21
PARK 5-9PM

PURCHASE A TABLE FOR 8
FOR \$10 PER PERSON.
FOOD & BEVERAGE
AVAILABLE FOR PURCHASE.
NO OUTSIDE FOOD, DRINKS,
OR COOLERS ALLOWED.

RESERVE TABLES BY CALLING 219.313.3934
WICKERMEMORIALPARK.COM

WICKER MEMORIAL PARK SOCIAL CENTER
RIDGE RD. & 41 HIGHLAND, IN. 46322

Griffith Lutheran Church
9th Annual Community
Bar-B-Q & CAR SHOW

Sunday, August 15, 2021

Picnic: 11am until food runs out

Car Show: Registration 10:30 am,

Show 11am - 2pm, Awards 1:30 pm

1000 N. Broad St., Griffith, IN

***Hot
Wheel
RACES!***



***Polish up your rides & please come out
& join us for Food, Fun and Games!!***

**GREAT
FOOD**

- *Admission to car show and picnic is FREE!
- *Children's games, prizes and crafts
- *Music: Entertainment provided by OLD GOLD Cover Band
- *1st place Awards for Car, Truck & Motorcycle Entries
- *Goodie Bags for First 25 Show Entries
- *Giveaways to Show Entrants

\$10 Pre-Registration, \$15 day of show
Early registration starts at 9am

**For more info contact Mark Stutler 219-365-2344
or Griffith Lutheran Church 219-838-1626**



2021 Fall/Winter Registration

Wednesday August 18 & Thursday

August 19

Lincoln Center

2450 Lincoln Street, Highland

6:30 - 8:00pm

Email:

president@highlandhurricanes.net
for more information

New swimmers need to
bring a copy of birth certificate

**ADRIAN A. SANTOS
NORTH TOWNSHIP
TRUSTEE**



CRUISE NIGHTS

AT WICKER MEMORIAL PARK

**4PM - 7PM
WEDNESDAYS**

MAY 26

JUNE 23

JULY 28

AUGUST 25

SEPTEMBER 22

HALLOWEEN CRUISE

OCTOBER 27

**FOOD VENDORS, MUSIC
FREE ADMISSION**

**PARKING OPENS AT 3:30PM
LIMITED AVAILABILITY**

**WICKER MEMORIAL PARK
RIDGE RD. & ROUTE 41 HIGHLAND, IN**

FOR MORE INFORMATION CONTACT: KELLY BRIDGES | (219)313-3934

DONATE WHILE *You Dine!*

Sunday, August 22nd from 3 – 8 PM

Culver's of Highland will donate 20% of sales to
First Presbyterian Church of Highland!



*Simply mention
"First Presbyterian"
when ordering*



Come on in to your local Culver's restaurant:

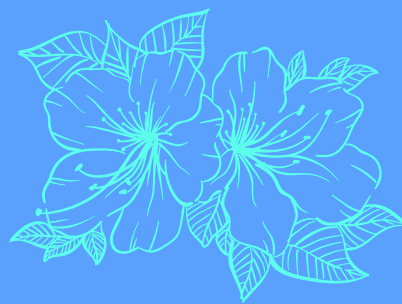
Culver's of Highland
@ the corner of Ridge Rd & Cline Ave
(219) 934-7900



CULVERS.COM

© 2018 Culver Franchising System, LLC
Limited time offer. At participating Culver's restaurants. 6/18

THE LARRY NEFF CENTER FOR CAREER CONNECTIONS



NATIONAL WOMEN'S EQUALITY DAY

THURSDAY, AUGUST 26TH

9:00AM - 4:00PM

Visit the Griffith Center for Career Connections on this day to receive assistance for any of the variety of services that we offer and complete the trivia in recognition of National Women's Equality Day for an opportunity to win a prize. Everyone wins!

≡ EQUALITY ≡



Contact:

Yiakeshia Herma
1601 West 45th Avenue
Griffith, IN. 46319
(219)513-9307
yherma@goodwill-ni.org





For making Baum's Natural Foods your
Hometown Health Food Stores!

Join us in August to celebrate our
40th Anniversary
with a whole month of giveaways!



Some of our prizes include:

- Gift Certificates
- Juices & Smoothies
- Assorted Vitamins
- Ion Cleanse Detox Sessions
- & So Much More!

See a complete list of rules & prizes in stores

**Come in and
spin our prize wheel!**

baums 
natural
foods

Highland-
2130 45th St.
219-922-1050

Merrillville-
411 W. 81st Ave
219-769-3140

THE LARRY NEFF CENTER FOR CAREER CONNECTIONS

INDEED ASSESSMENTS


MONDAY – FRIDAY

9:00 AM – 4:00PM

Assessments will be offered in the focus areas of critical thinking, attention to detail, problem solving, data entry, customer focus and bookkeeping.

Contact:
Yiakeshia Herma
1601 West 45th Avenue
Griffith, IN. 46319
(219)513-9307
yherma@goodwill-ni.org





**THE LARRY NEFF CENTER FOR
CAREER CONNECTIONS**

NORTH STAR DIGITAL LITERACY TRAINING

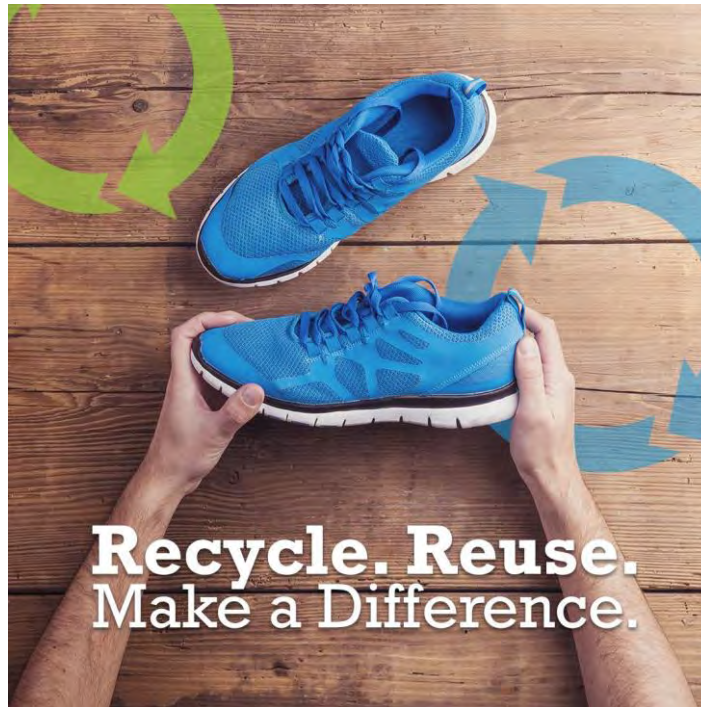
MONDAY - FRIDAY

9:00AM - 4:00PM

In this training, you will perform various tasks that will be assessed online through self-guided modules. Included are basic computer digital literacy standards and modules in the areas of Basic Computer Use, Internet Basics, Windows and Mac Operating Systems, Microsoft Word, Excel, and PowerPoint, along with Email, Social Media, and Information Literacy.

Contact:
Yiakeshia Herma
1601 West 45th Avenue
Griffith, IN. 46319
(219)513-9307
yherma@goodwill-ni.org





GOT SNEAKERS FUNDRAISER

- WHO:** First Presbyterian Church of Highland
- WHAT:** SNEAKERS!! We are collecting gently worn used tennis shoes/athletic shoes ONLY.
- WHEN:** Now through October
- WHY:** To earn money for our church's mission and to help the environment.
- WHERE:** First Presbyterian Church
8727 Delaware St.
Highland, IN 46322
- Blue bins are located INSIDE DOOR D and in narthex. There is also a bin located OUTSIDE DOOR D. Questions? Call 219-838-6850 (Office hours M-TH 8-1)