



**HighlandGriffith**  
CHAMBER OF COMMERCE

*Promoting Good Business*

# *Member Happenings*

HIGHLANDGRIFFITHCHAMBER.COM



# 2021 Fall/Winter Registration

Wednesday August 18 & Thursday

August 19

Lincoln Center

2450 Lincoln Street, Highland

6:30 - 8:00pm

Email:

[president@highlandhurricanes.net](mailto:president@highlandhurricanes.net)  
for more information

New swimmers need to  
bring a copy of birth certificate



Marketing and Corporate Communications  
901 MacArthur Blvd.  
Munster, Indiana 46321  
P: 219-703-1947  
F: 219-703-6641  
COMHS.org

# News Release

---

Community Hospital • Munster | St. Catherine Hospital • East Chicago | St. Mary Medical Center • Hobart  
Community Stroke and Rehabilitation Center • Crown Point

---

July 2, 2021

FOR IMMEDIATE RELEASE

## Community Healthcare System hosting Open Interviews

Community Healthcare System is offering open interviews to fill full- and part-time positions at multiple locations across Northwest Indiana.

Job seekers are encouraged to drop in during open interviews, which will take place from **8 to 10 a.m. and 1 to 3 p.m. every Thursday through August 19** at the following locations:

- **Community Hospital/CHS Conference Center**, 9201 Calumet Ave., Munster
- **St. Catherine Hospital**, 4321 Fir St., East Chicago
- **St. Mary Medical Center**, 1500 S. Lake Park Ave., Hobart
- **Community Stroke & Rehabilitation Center**, 10215 Broadway, Crown Point

“We are always looking for caring, compassionate people to join our team,” said Tony Ferracane, vice president of Human Resources for Community Healthcare System. “These interviews provide an easy opportunity for job candidates to meet directly with our recruiters at multiple locations throughout our system.”

Job opportunities are available throughout the healthcare system, including the hospitals, clinics and physician offices. Benefit-eligible positions include health insurance, paid time off, retirement contribution and more.

### Available positions include:

- Case managers
- Cooks
- Dietary stewards
- Environmental service assistants
- Food service workers
- Pharmacy techs
- Medical assistants
- Medical technologists
- Nursing assistants
- Phlebotomists
- Registered nurses
- Registration representatives
- Respiratory therapists
- Social workers
- Surgery techs

Visit [COMHS.org/careers](https://www.comhs.org/careers) to view available jobs and apply online.

###



WICKER MEMORIAL PARK  
**ADRIAN A. SANTOS**

NORTH TOWNSHIP TRUSTEE PRESENTS

**TICKETS**  
**\$7**

*Summer*  
**CONCERT SERIES 2021**

**21 AND OVER**  
**RAIN OR SHINE**

Thursdays 7:30pm - 10:30pm | Doors open at 6:00pm

Tickets Available At **Eventbrite**

SEASON PASSES AVAILABLE FOR \$50



**6-24**

**Trippin Billies**  
DAVE MATTHEWS TRIBUTE  
TRIPPINBILLIES.COM



**7-1**

**One of These Nights**  
A TRIBUTE TO THE EAGLES  
ONEOFTHESENIGHTSBAND.COM



**7-8**

**Small Town**  
A JOHN MELLENCAMP  
EXPERIENCE  
FACEBOOK.COM/SMALL.TOWN.BAND.INDIANA



**7-15**

**Double Vision**  
THE ULTIMATE FOREIGNER  
EXPERIENCE  
DOUBLEVISIONBAND.COM



**7-22**

**Kashmir**  
CHICAGO'S LED ZEPPELIN SHOW  
KASHMIRCHICAGO.COM



**7-29**

**MegaBeatles**  
A TRIBUTE TO THE MUSIC OF  
THE BEATLES  
FACEBOOK.COM/MEGABEATLES



**8-5**

**Southern Accents**  
A TRIBUTE TO TOM PETTY  
SOUTHERNACCENTS.COM



**8-12**

**Queen Flash**  
A TRIBUTE TO THE  
MUSIC QUEEN  
QUEENFLASH.CA



**8-19**

**Echoes of Pompeii**  
PINK FLOYD TRIBUTE  
ECHOESOF POMPEII.COM



**9-9**

**Heavy**  
SPECIALIZING MOTOWN, R&B,  
LATIN, & SOFT ROCK  
THEBANDHEAVY.ORG

**SAVE THE DATE**  
**PINTS**  
**IN THE 8/21**  
**PARK 5-9PM**

**PURCHASE A TABLE FOR 8**  
**FOR \$10 PER PERSON.**  
**FOOD & BEVERAGE**  
**AVAILABLE FOR PURCHASE.**  
**NO OUTSIDE FOOD, DRINKS,**  
**OR COOLERS ALLOWED.**

RESERVE TABLES BY CALLING 219.313.3934  
WICKERMEMORIALPARK.COM

WICKER MEMORIAL PARK SOCIAL CENTER  
RIDGE RD. & 41 HIGHLAND, IN. 46322



# DONATE WHILE *You Dine!*

Sunday, August 22<sup>nd</sup> from 3 – 8 PM

Culver's of Highland will donate 20% of sales to  
**First Presbyterian Church of Highland!**



*Simply mention  
"First Presbyterian"  
when ordering*



Come on in to your local Culver's restaurant:

Culver's of Highland  
@ the corner of Ridge Rd & Cline Ave  
(219) 934-7900



CULVERS.COM

© 2018 Culver Franchising System, LLC  
Limited time offer. At participating Culver's restaurants. 6/18

**ADRIAN A. SANTOS  
NORTH TOWNSHIP  
TRUSTEE**



# **CRUISE NIGHTS**

## **AT WICKER MEMORIAL PARK**

**4PM - 7PM  
WEDNESDAYS**

**MAY 26**

**JUNE 23**

**JULY 28**

**AUGUST 25**

**SEPTEMBER 22**

**HALLOWEEN CRUISE**

**OCTOBER 27**

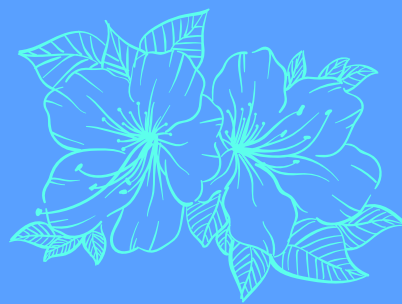
**FOOD VENDORS, MUSIC  
FREE ADMISSION**

**PARKING OPENS AT 3:30PM  
LIMITED AVAILABILITY**

**WICKER MEMORIAL PARK  
RIDGE RD. & ROUTE 41 HIGHLAND, IN**

**FOR MORE INFORMATION CONTACT: KELLY BRIDGES | (219)313-3934**

THE LARRY NEFF CENTER FOR CAREER CONNECTIONS



# NATIONAL WOMEN'S EQUALITY DAY

THURSDAY, AUGUST 26TH

9:00AM - 4:00PM

Visit the Griffith Center for Career Connections on this day to receive assistance for any of the variety of services that we offer and complete the trivia in recognition of National Women's Equality Day for an opportunity to win a prize. Everyone wins!

≡ EQUALITY ≡



**Contact:**

**Yiakeshia Herma**  
1601 West 45th Avenue  
Griffith, IN. 46319  
(219)513-9307  
[yherma@goodwill-ni.org](mailto:yherma@goodwill-ni.org)





**ADRIAN A. SANTOS**  
NORTH TOWNSHIP TRUSTEE

**AUG.  
29TH  
1PM-7PM**



WICKER MEMORIAL PARK  
**FOOD TRUCK  
& ARTISAN**  
*Fest*

**ADMISSIONS: \$3 ADULTS, CHILDREN AGES 10 AND UNDER ARE FREE**

**Food Trucks – The Cheesy Food Truck, Moe's Mediterranean, Sizzlebox, Parlay Grill, Dan's Pierogi's, Cute as A Cupcake & More**

**Music Line Up – Jamrose, Neighborhood Blues Bands, & Mr. Funnyman**

**CASH BAR AVAILABLE FOR THOSE 21 AND OVER.**

**FOR MORE INFO: (219) 313-3934 | WICKER MEMORIAL PARK, 2215 RIDGE RD. HIGHLAND, IN**



**AUGUST**

*restaurant  
crawl*

**DINING**

**SHOPPING**

**DOWNTOWN HIGHLAND**

**Tuesday August 31st, 4-8 pm**





For making Baum's Natural Foods your  
**Hometown Health Food Stores!**

Join us in August to celebrate our  
**40th Anniversary**  
with a whole month of giveaways!



**Some of our prizes include:**

- Gift Certificates
- Juices & Smoothies
- Assorted Vitamins
- Ion Cleanse Detox Sessions
- & So Much More!

See a complete list of rules & prizes in stores

**Come in and  
spin our prize wheel!**

baums   
**natural**  

---

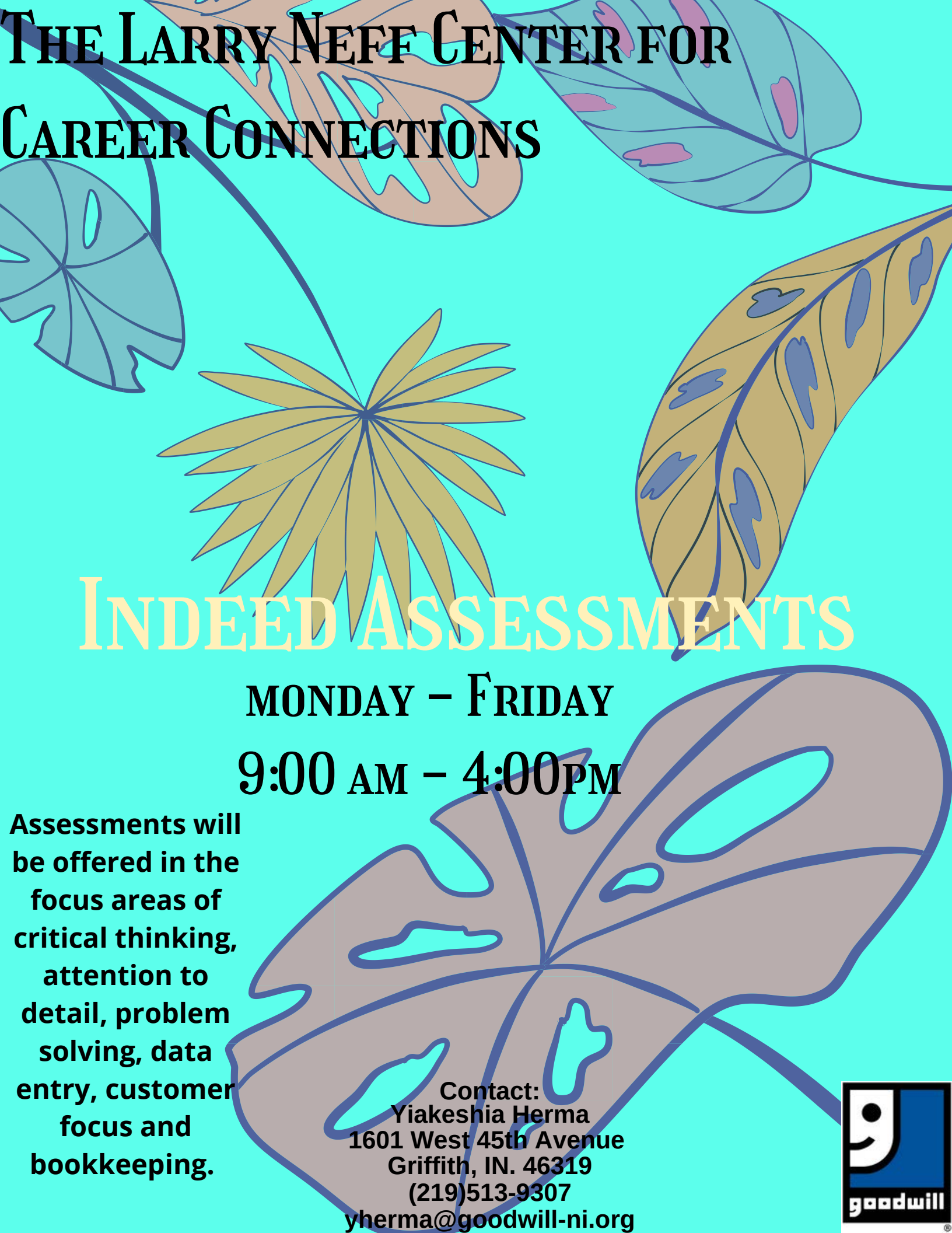
foods

**Highland-**  
2130 45th St.  
219-922-1050

**Merrillville-**  
411 W. 81st Ave  
219-769-3140



# THE LARRY NEFF CENTER FOR CAREER CONNECTIONS



## INDEED ASSESSMENTS

**MONDAY – FRIDAY**


**9:00 AM – 4:00PM**

Assessments will be offered in the focus areas of critical thinking, attention to detail, problem solving, data entry, customer focus and bookkeeping.

Contact:  
Yiakeshia Herma  
1601 West 45th Avenue  
Griffith, IN. 46319  
(219)513-9307  
[yherma@goodwill-ni.org](mailto:yherma@goodwill-ni.org)







THE LARRY NEFF CENTER FOR  
CAREER CONNECTIONS

# NORTH STAR DIGITAL LITERACY TRAINING

MONDAY - FRIDAY

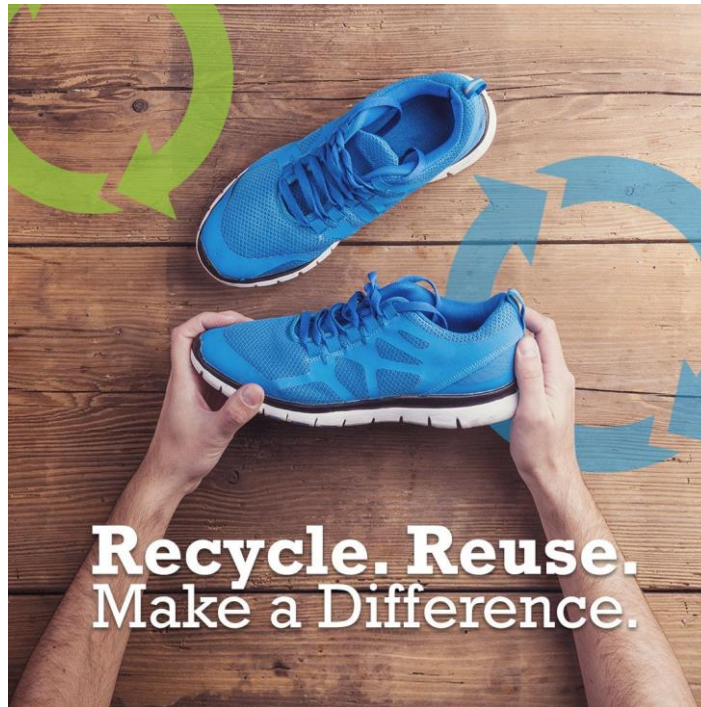
9:00AM - 4:00PM

In this training, you will perform various tasks that will be assessed online through self-guided modules. Included are basic computer digital literacy standards and modules in the areas of Basic Computer Use, Internet Basics, Windows and Mac Operating Systems, Microsoft Word, Excel, and PowerPoint, along with Email, Social Media, and Information Literacy.

Contact:  
Yiakeshia Herma  
1601 West 45th Avenue  
Griffith, IN. 46319  
(219)513-9307  
[yherma@goodwill-ni.org](mailto:yherma@goodwill-ni.org)







## **GOT SNEAKERS FUNDRAISER**

- WHO:** First Presbyterian Church of Highland
- WHAT:** SNEAKERS!! We are collecting gently worn used tennis shoes/athletic shoes ONLY.
- WHEN:** Now through October
- WHY:** To earn money for our church's mission and to help the environment.
- WHERE:** First Presbyterian Church  
8727 Delaware St.  
Highland, IN 46322
- Blue bins are located INSIDE DOOR D and in narthex. There is also a bin located OUTSIDE DOOR D. Questions? Call 219-838-6850 (Office hours M-TH 8-1)